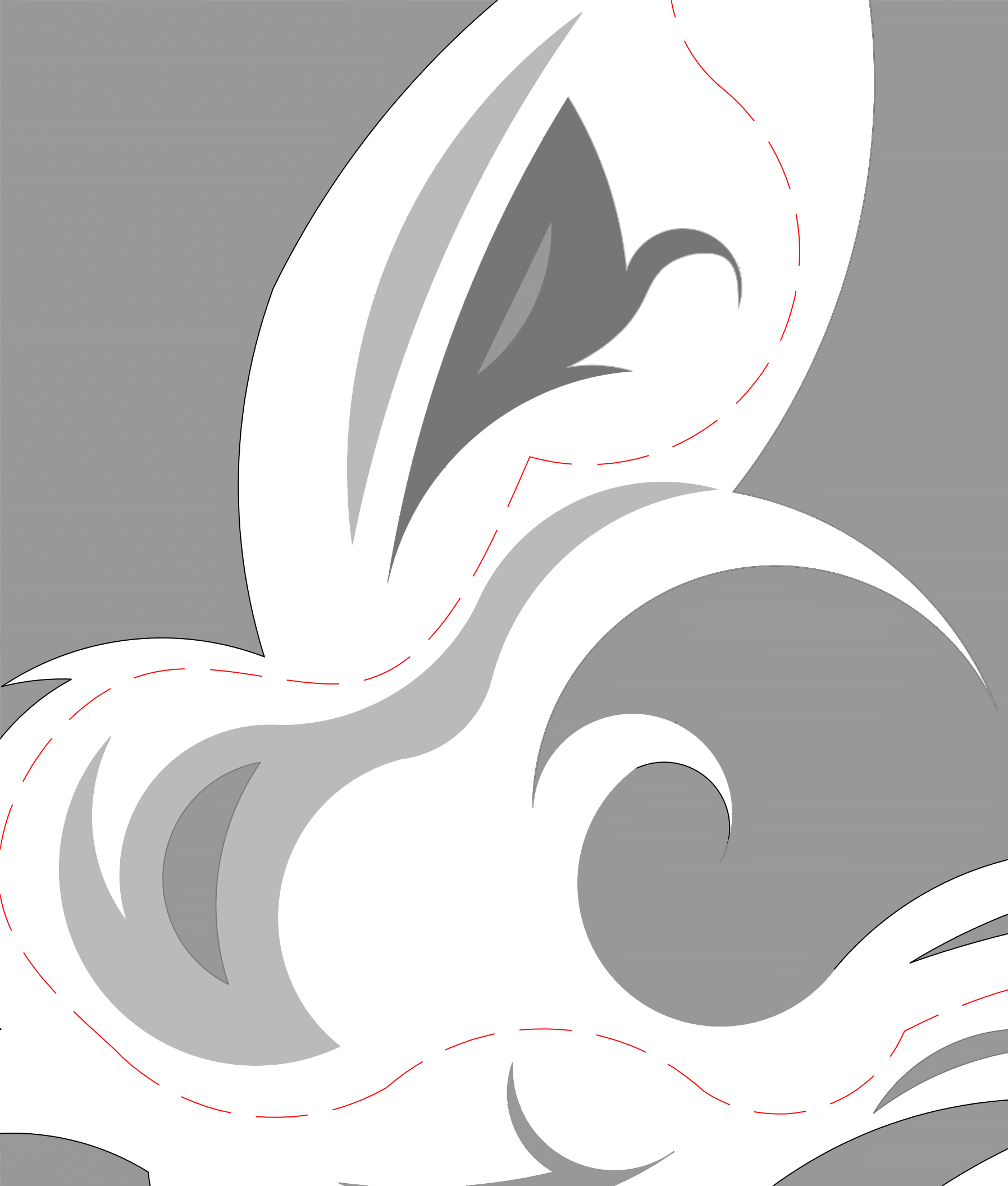


Haiji Walters
PORTFOLIO



CONTENTS

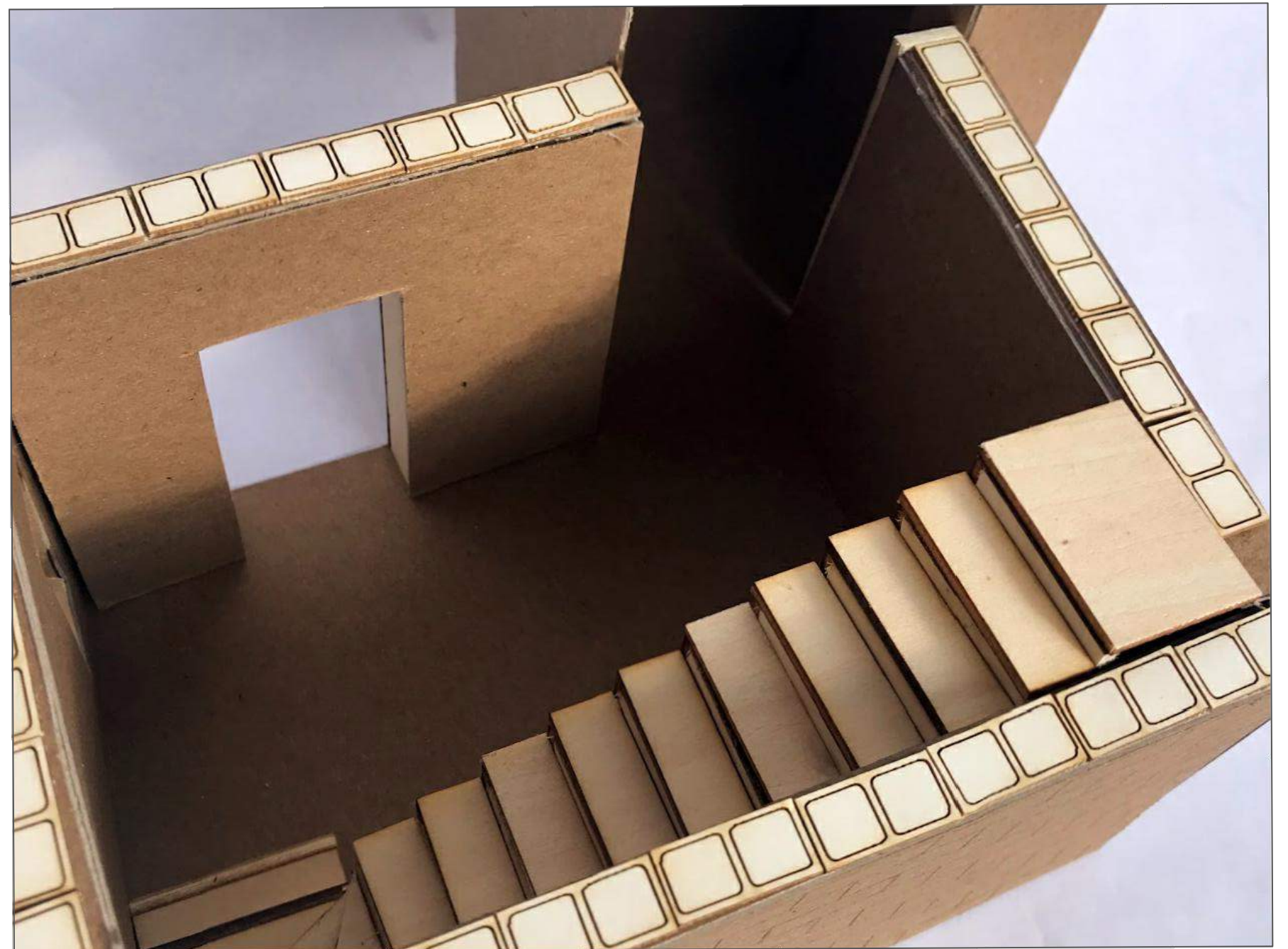
HILLTOP STUDIO.....	1
LABYRINTH OF CURLS.....	7
ART COMPLEX.....	9

HILLTOP STUDIO

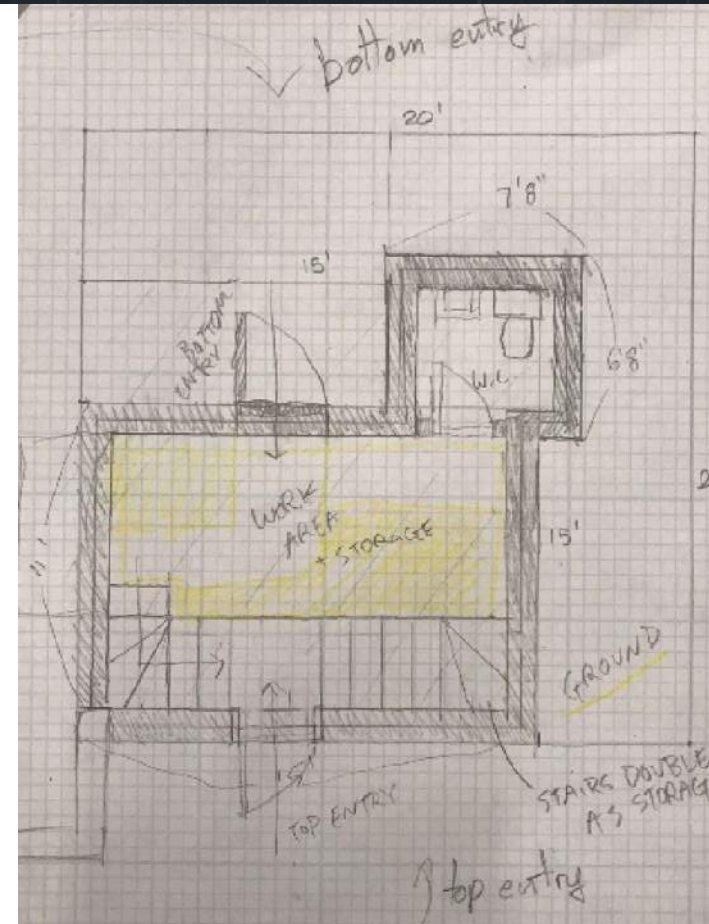
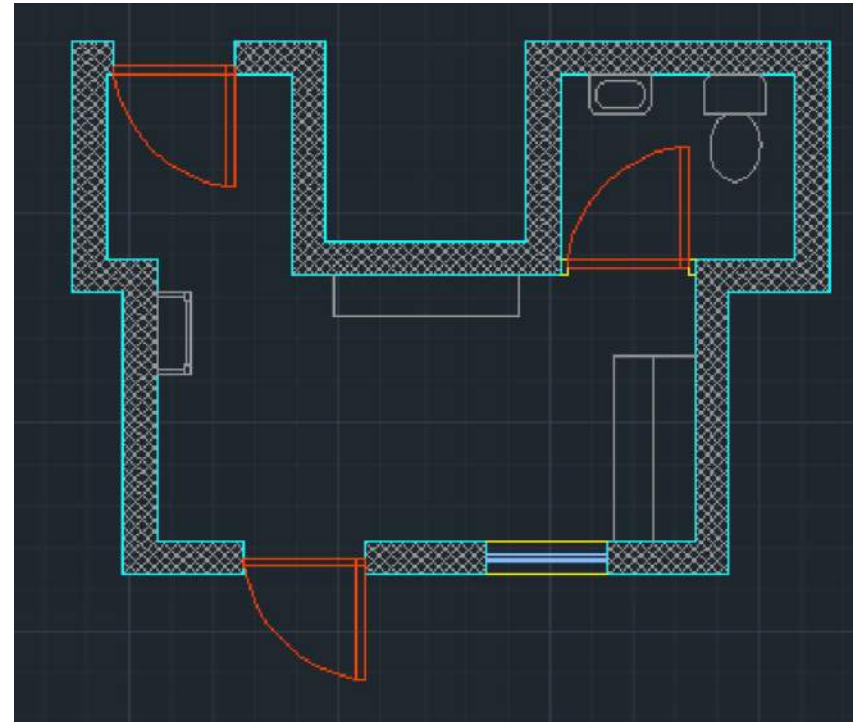
The Shapiro house by Louis Kahn is a testament to the ways in which architects can manipulate space and light. The objective of this project was to combine the elements seen in this building along with another work by Louis Kahn, the Esherick house, in order to create an additional studio space on the site of the Shapiro house.

The first floor mainly utilizes a CMU block wall, similar to what is seen in the Esherick house. On the other hand, the second floor uses a wood frame wall, more similar to what is seen in the Shapiro house.

The program includes a bathroom and rest area on the first floor, a studio space on the second floor, and an integrated storage unit in the stairs.



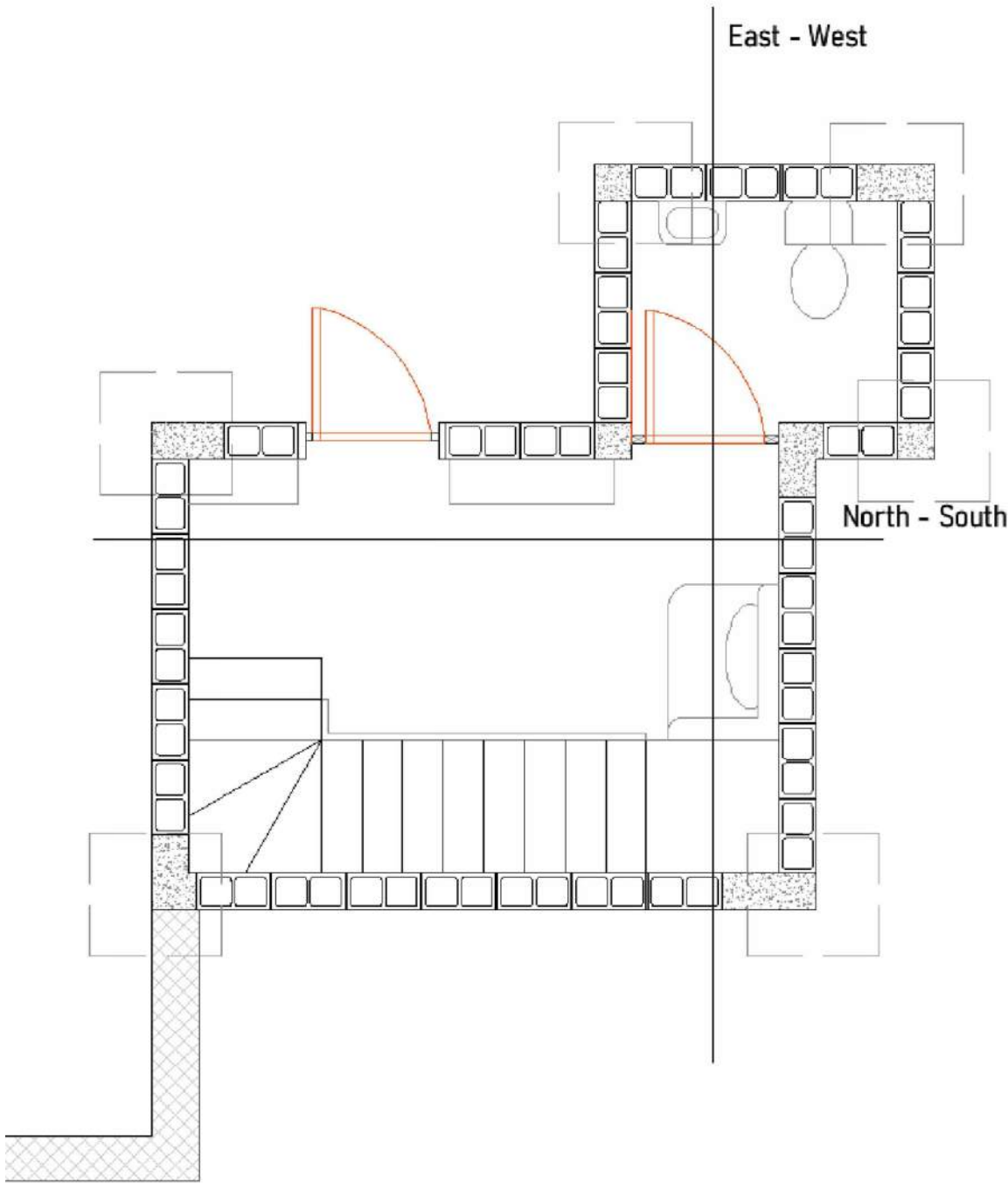
PROCESS AND SKETCHES



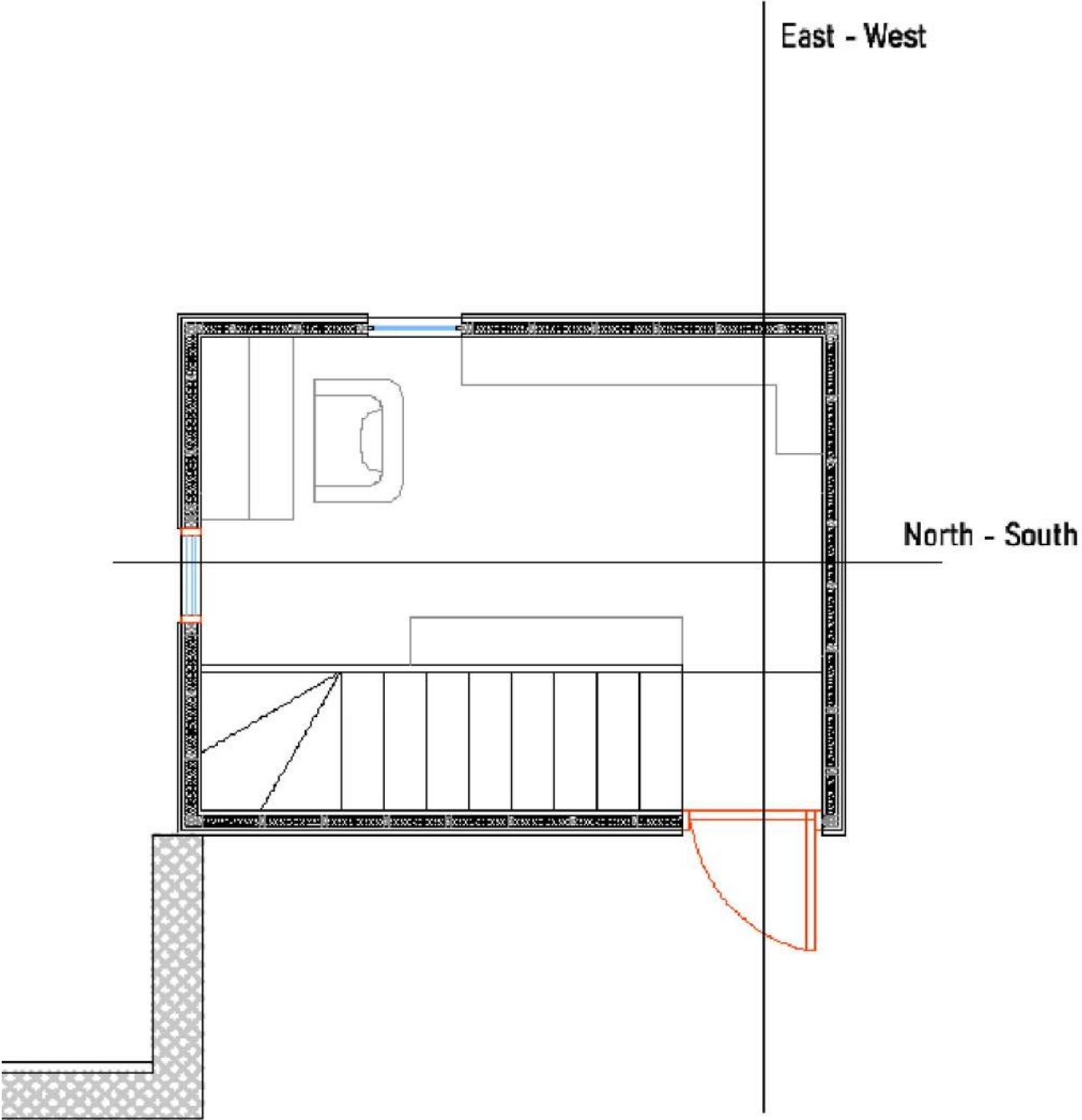
One challenge with this project was working around the elevation changes present in the site. There needed to be two entrances- one from the Northeast and one from the Southwest. I utilized this by incorporating the higher entrance into the stairs themselves.

Another challenge was staying within the limit of 220 square feet. The program requirements, along with the additional stipulation that the structure should have enough space to store around 300 books, meant that there was not a lot of wiggle room. My original design included an entry space which allowed the plan as a whole to read more as a symmetrical shape. This had to be cut in order to fit the square footage limit.

FINAL DESIGN

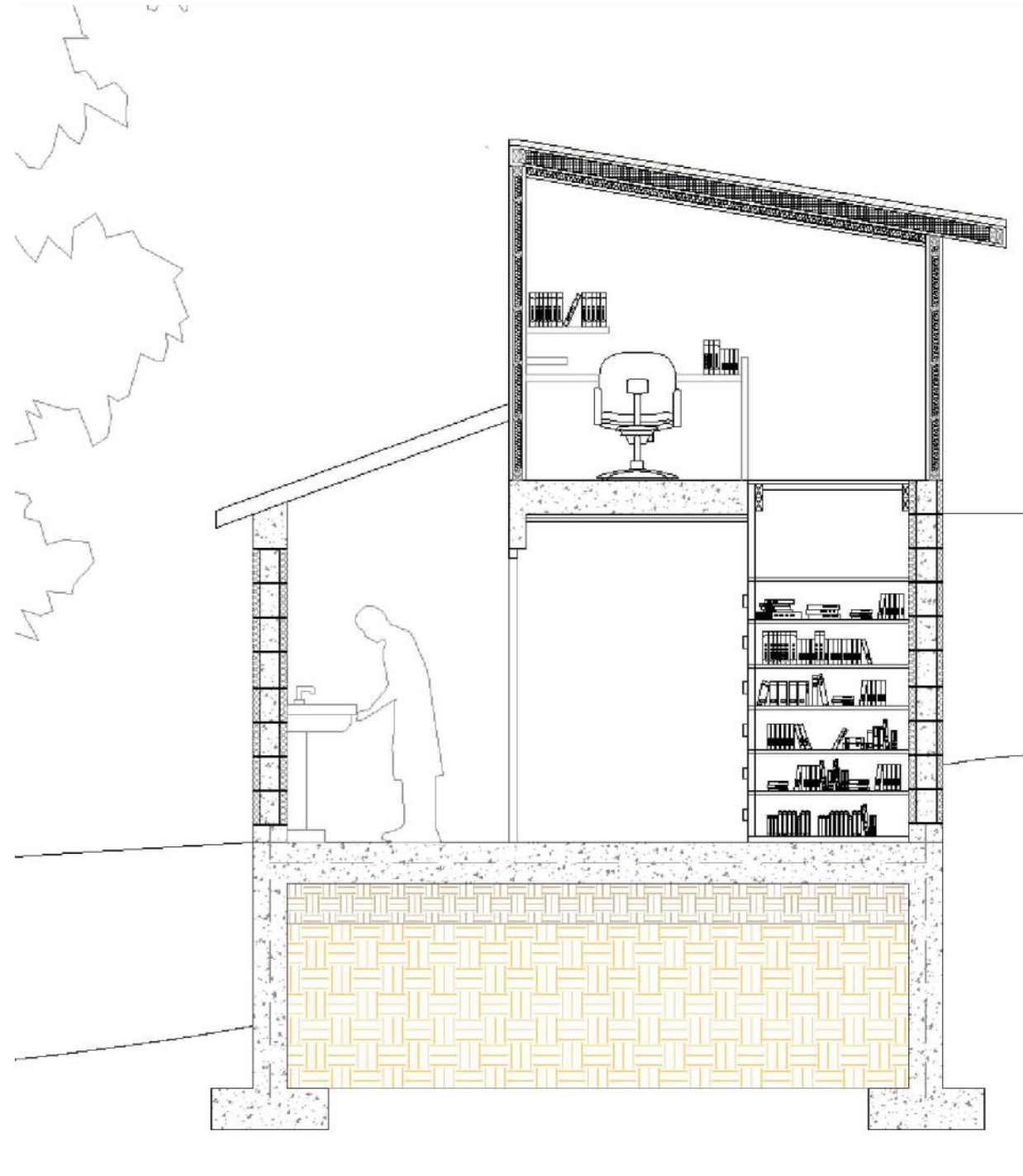


Ground Floor

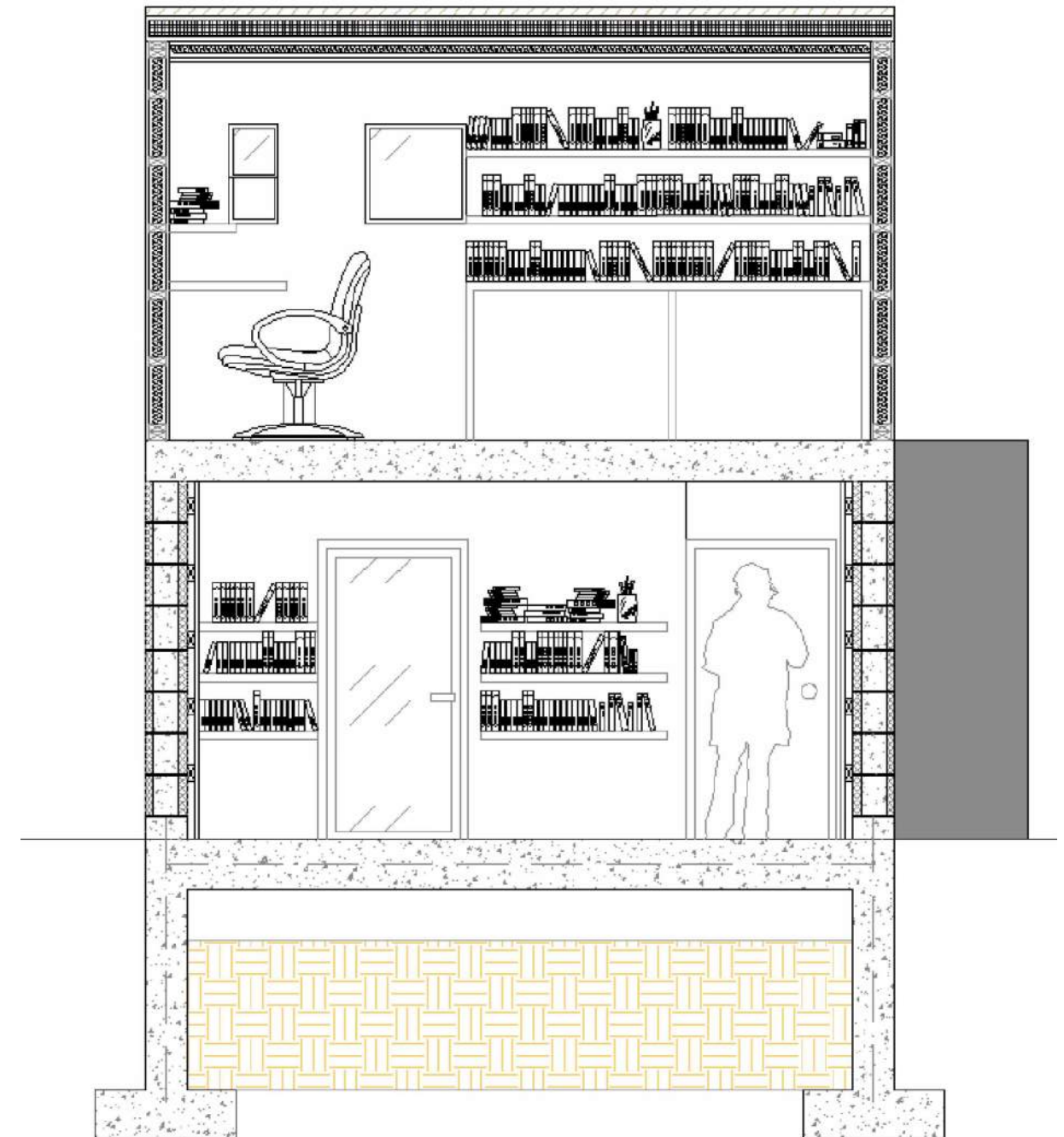


Second Floor

FINAL DESIGN

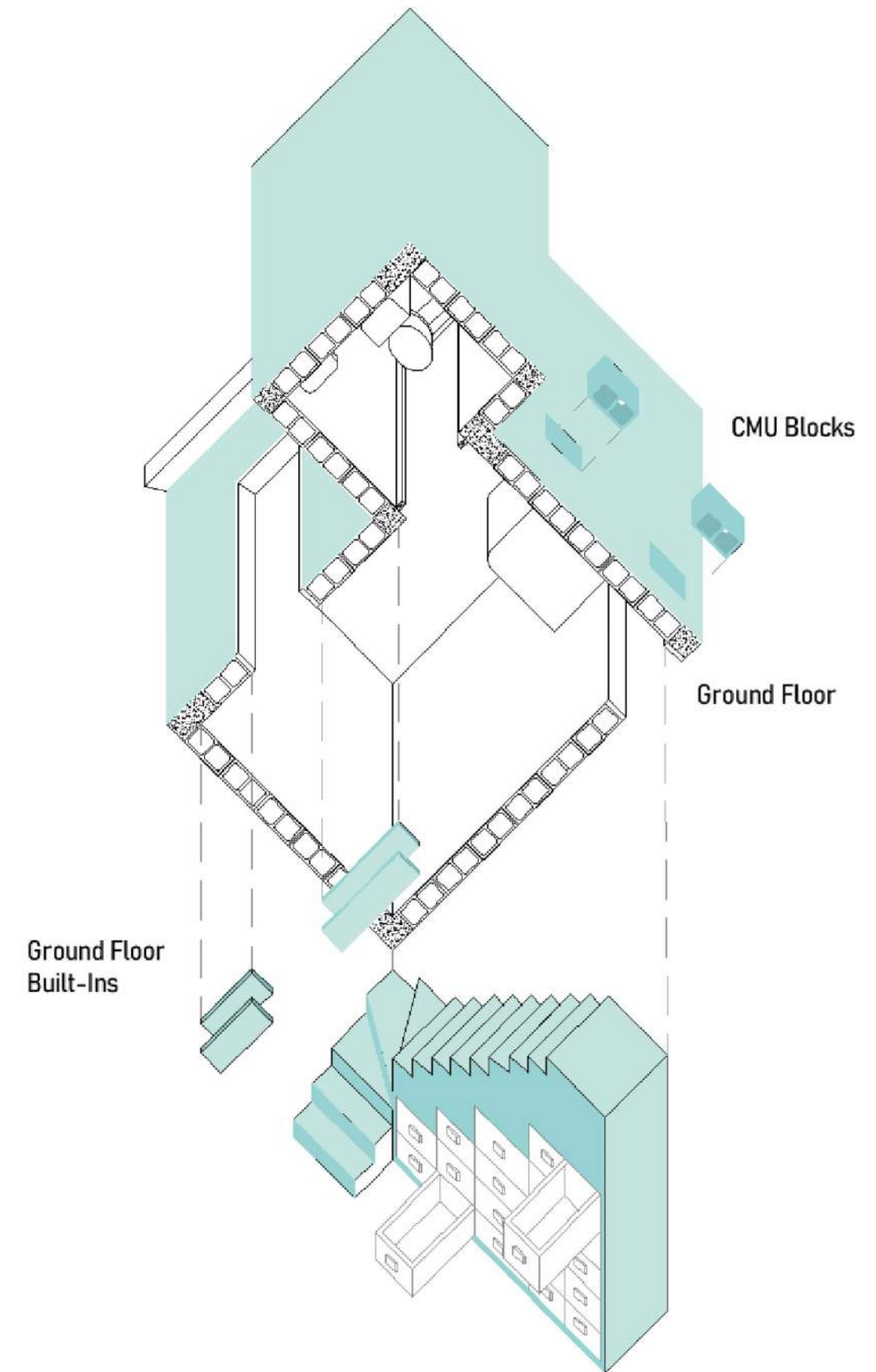
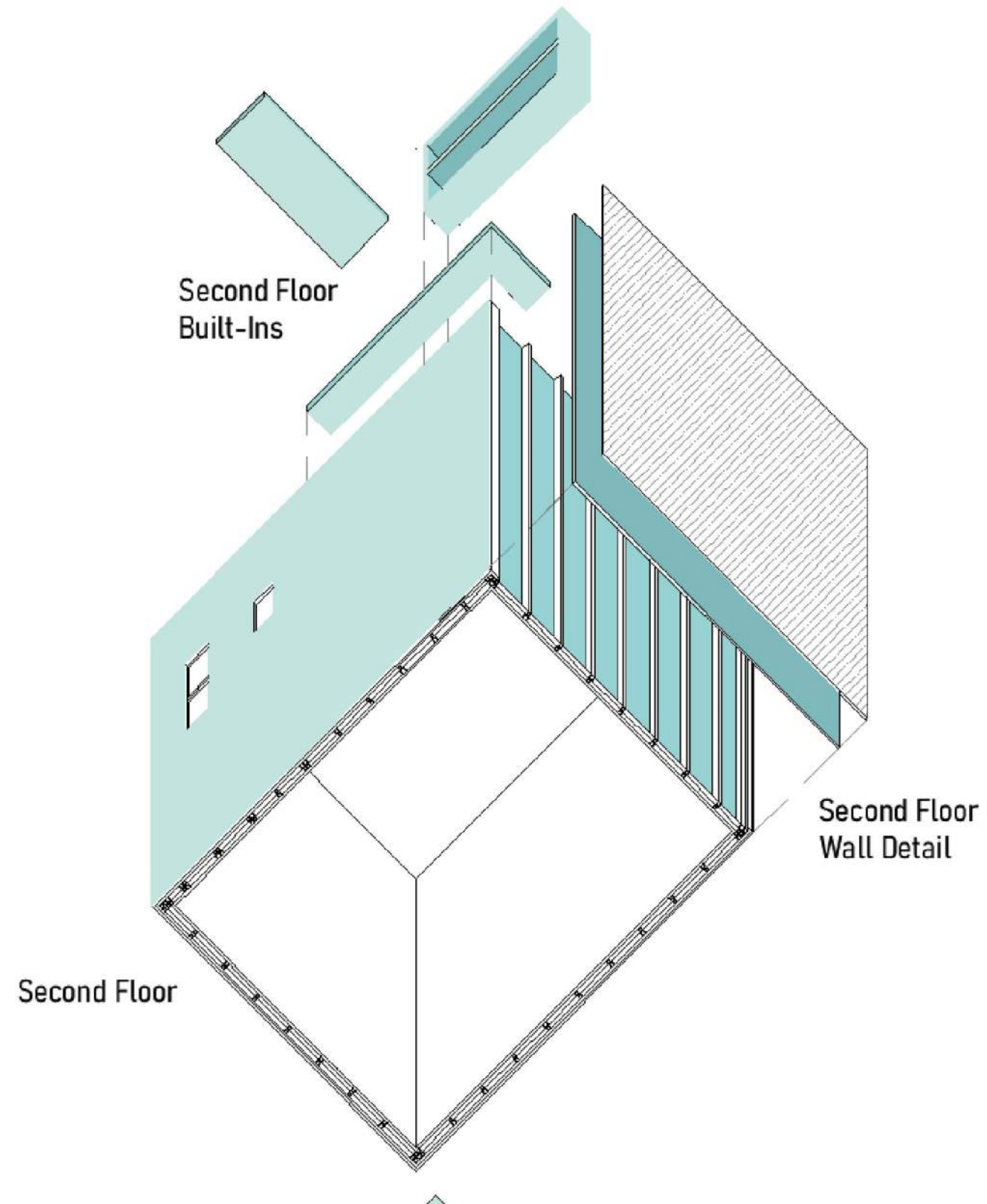


Ground Floor

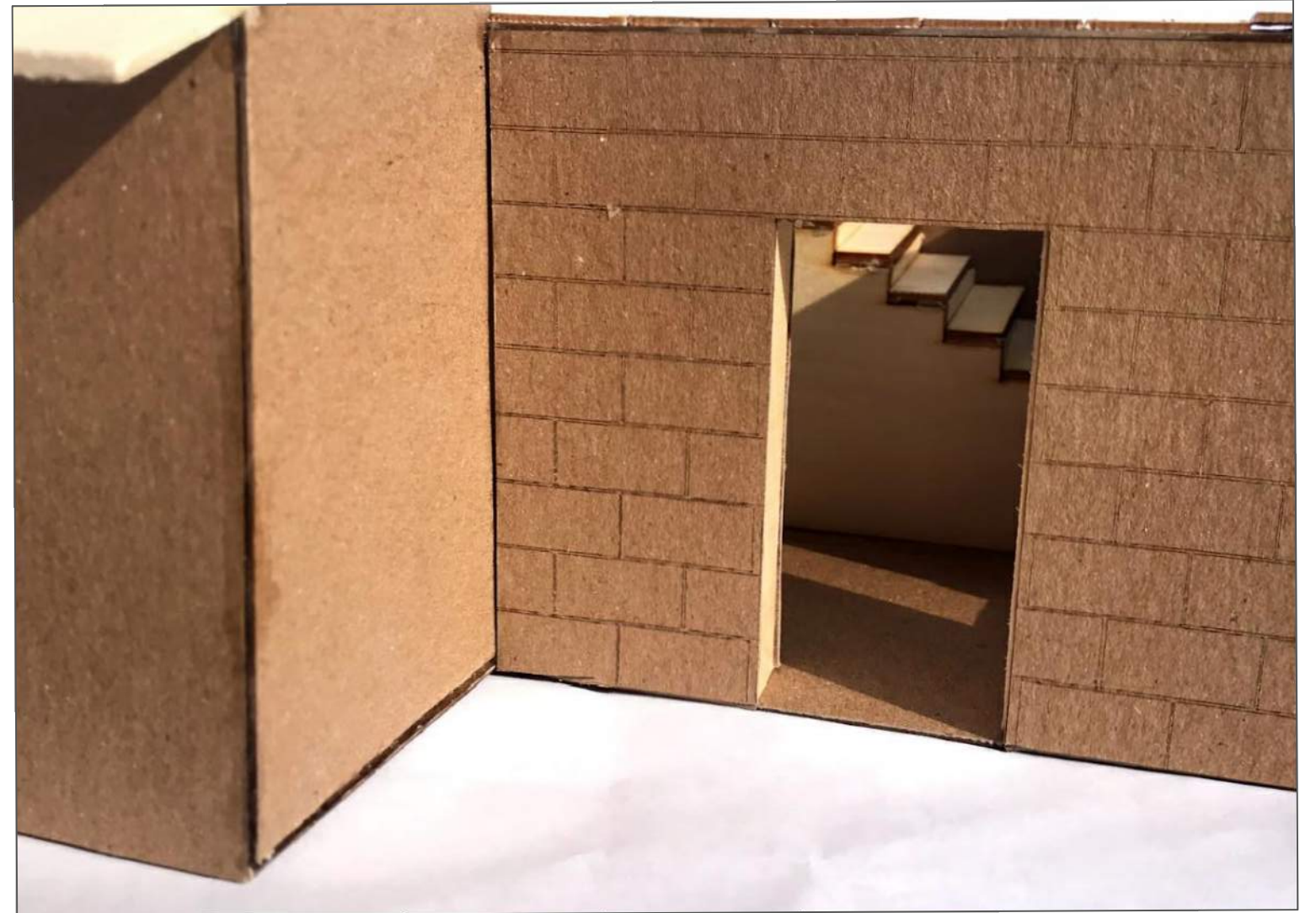
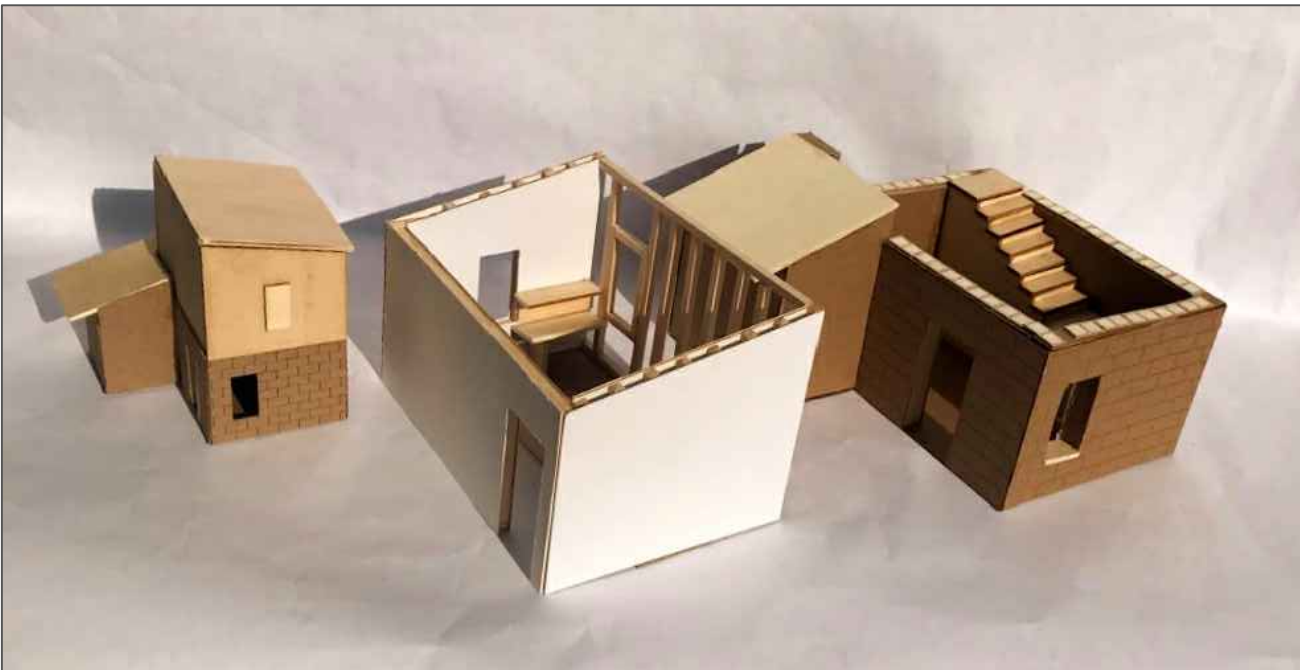
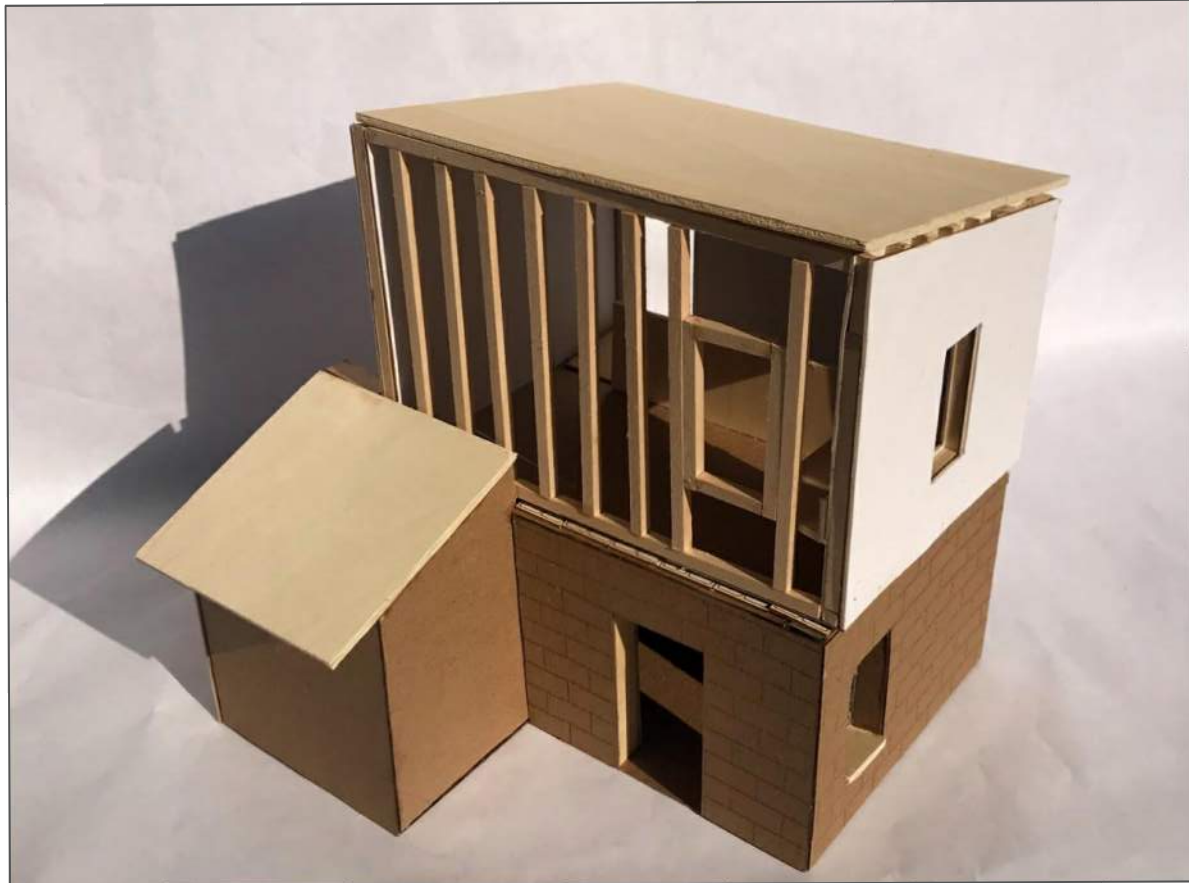


Second Floor

FINAL DESIGN



FINAL DESIGN



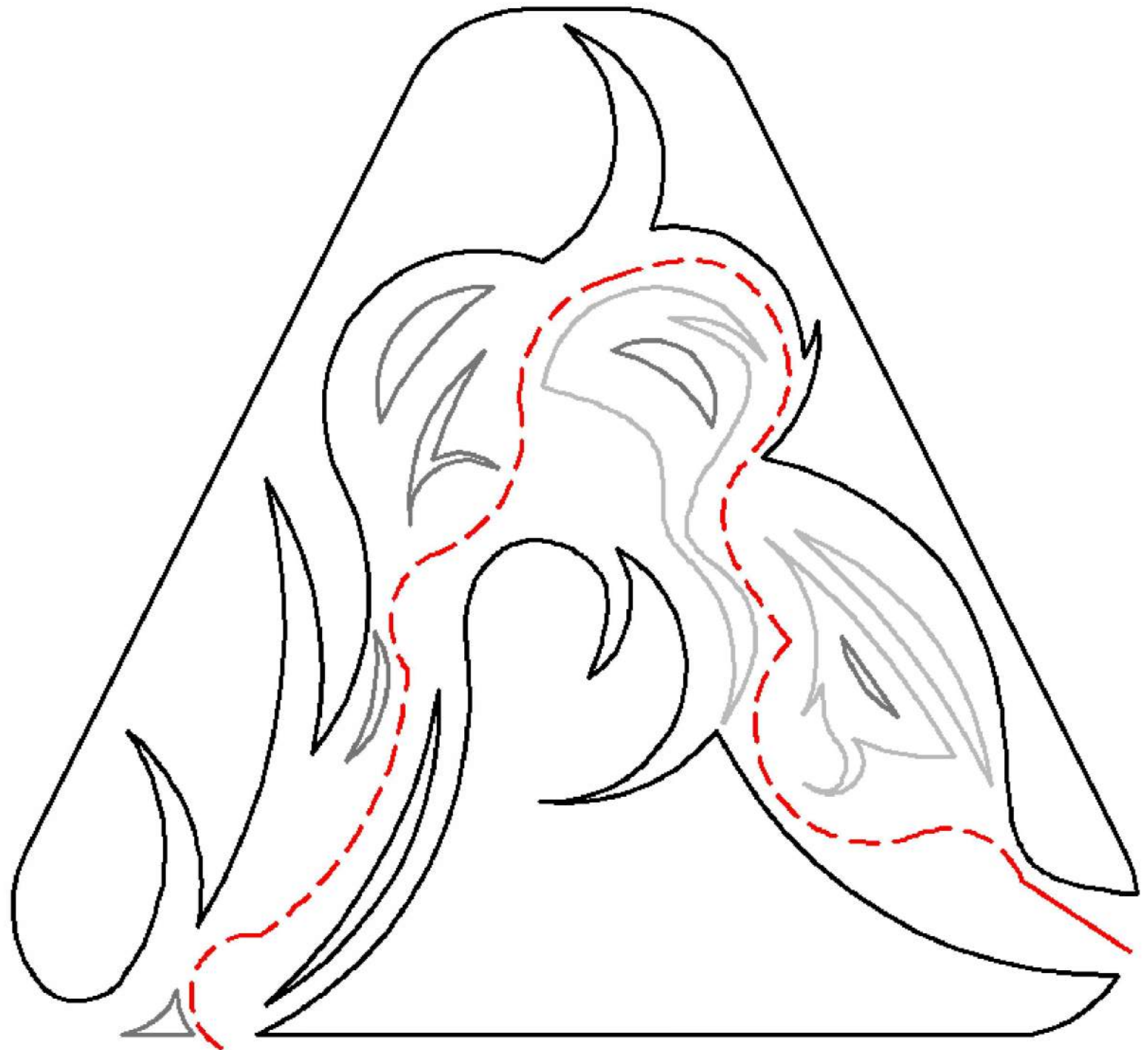
LABYRINTH OF CURLS

The works of French artist Alphonse Mucha are mesmerizing- particularly in the way in which he portrays hair. There is an irresistible allure in the way it swirls around, framing whatever figure is portrayed in the piece.

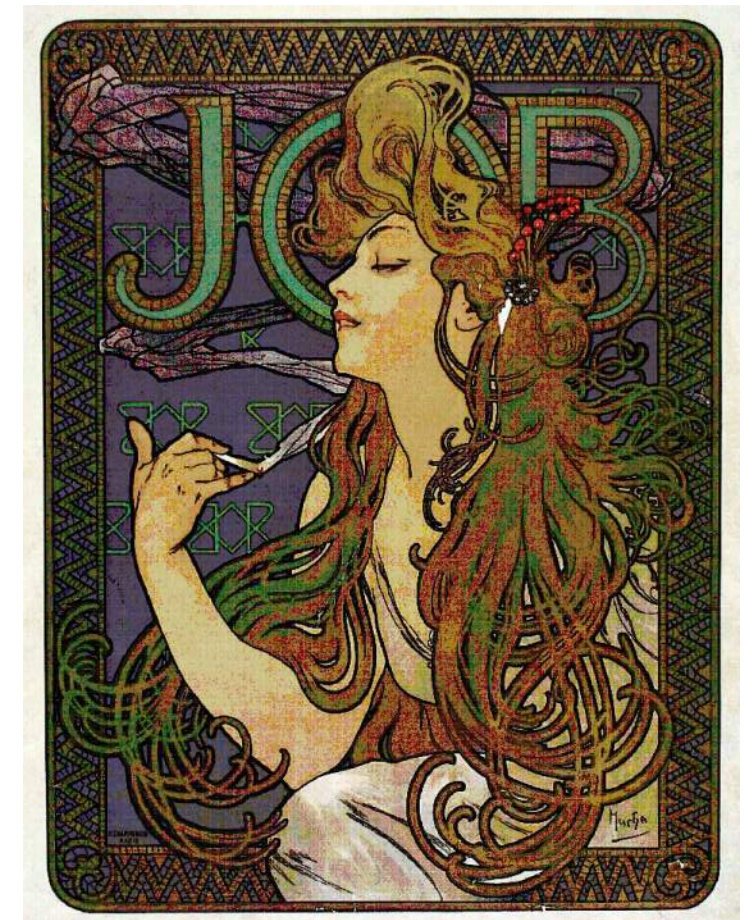
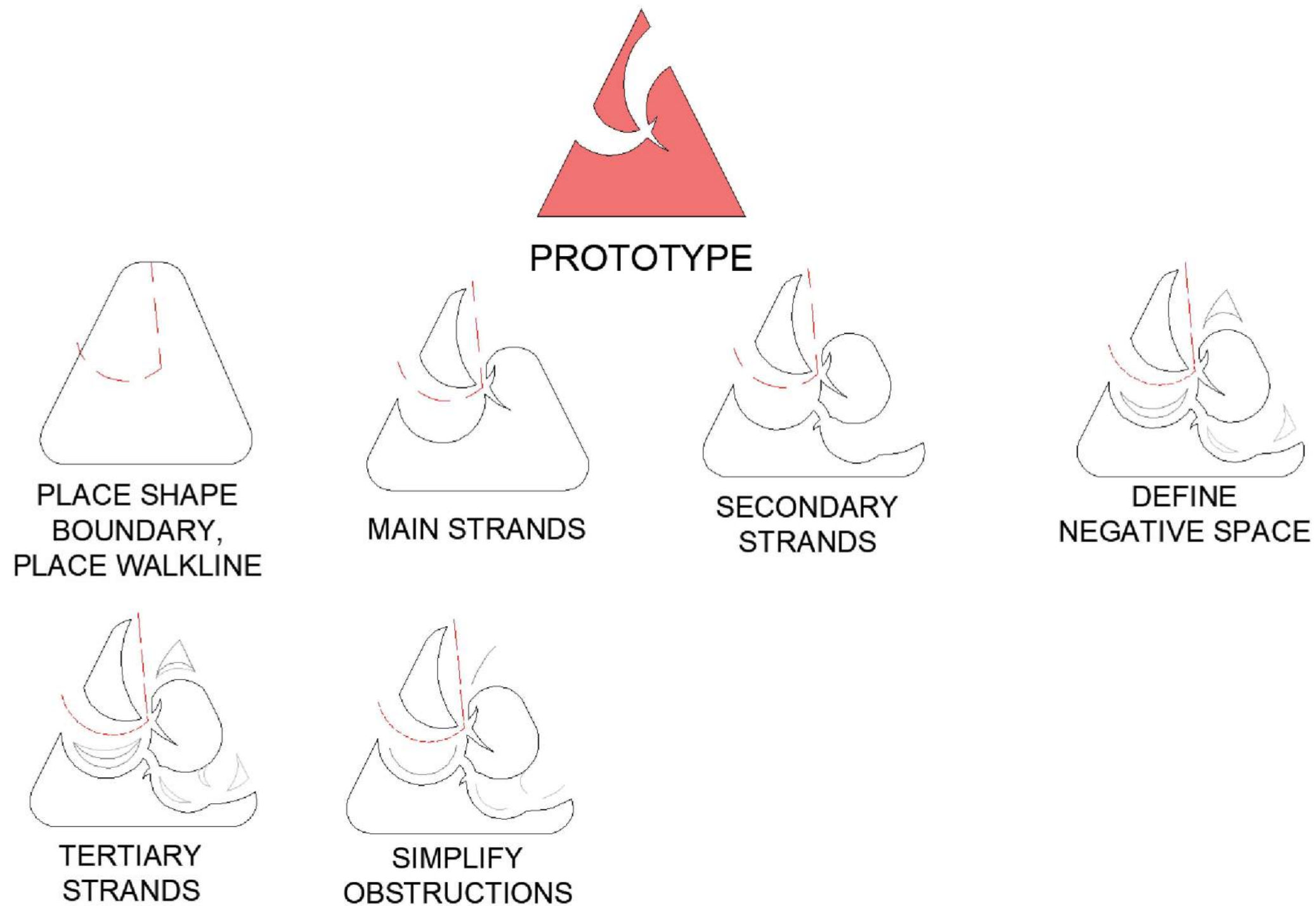
I wanted to translate this feeling into a maze-like structure. In the same way that the bristles of a brush find their way through the twists and turns of a head of hair, one may find themselves wondering through the many curves of this labyrinth.

For this project, I made 4 different iterations, each with a different amount of turns required in order to reach the exit.

In the plans, lighter lines denote different elevations. Lowered sections provide seating and some changes in ground elevation.



PROCESS



Inspiration:
Job by Alphonse Mucha

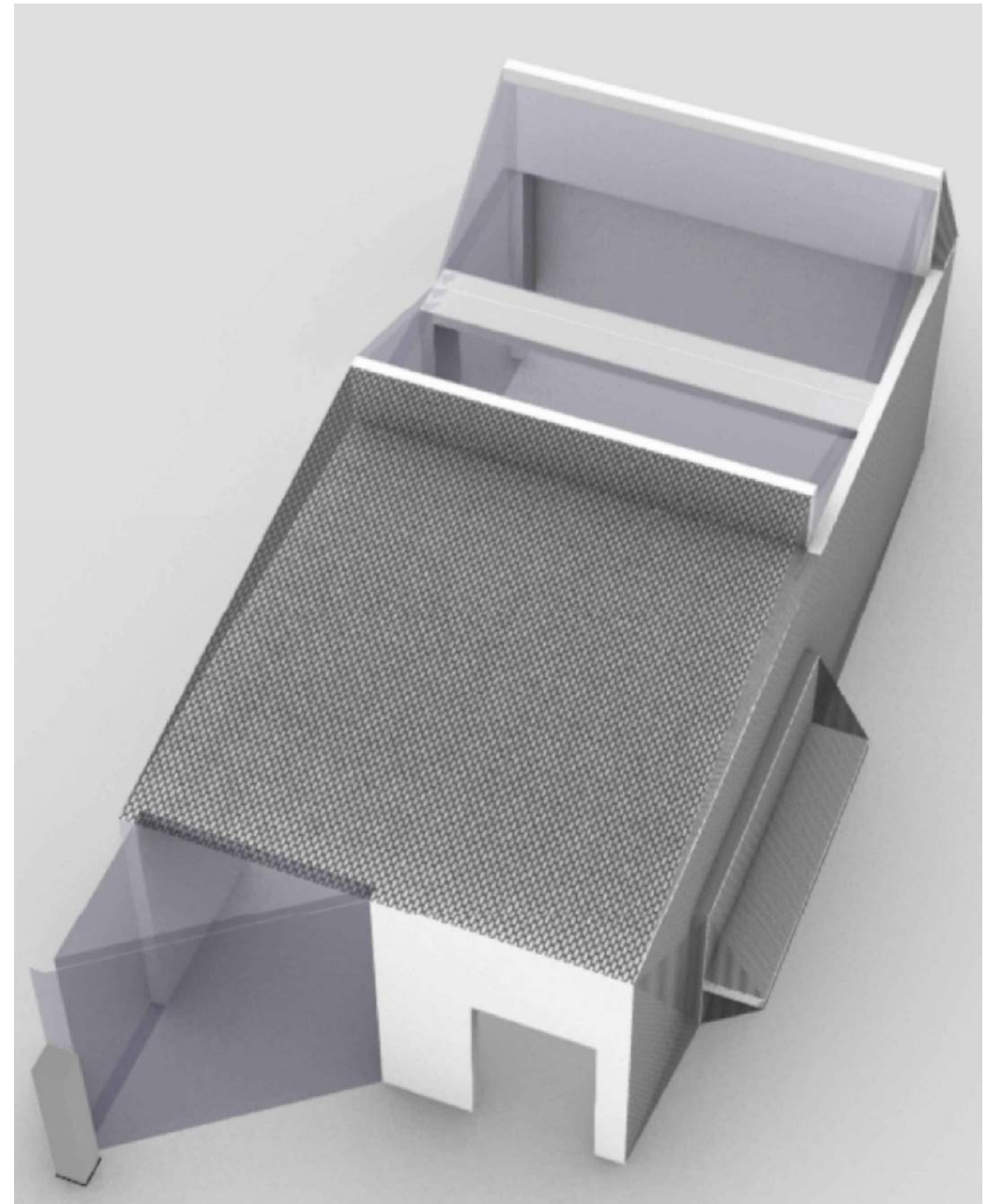
ART COMPLEX

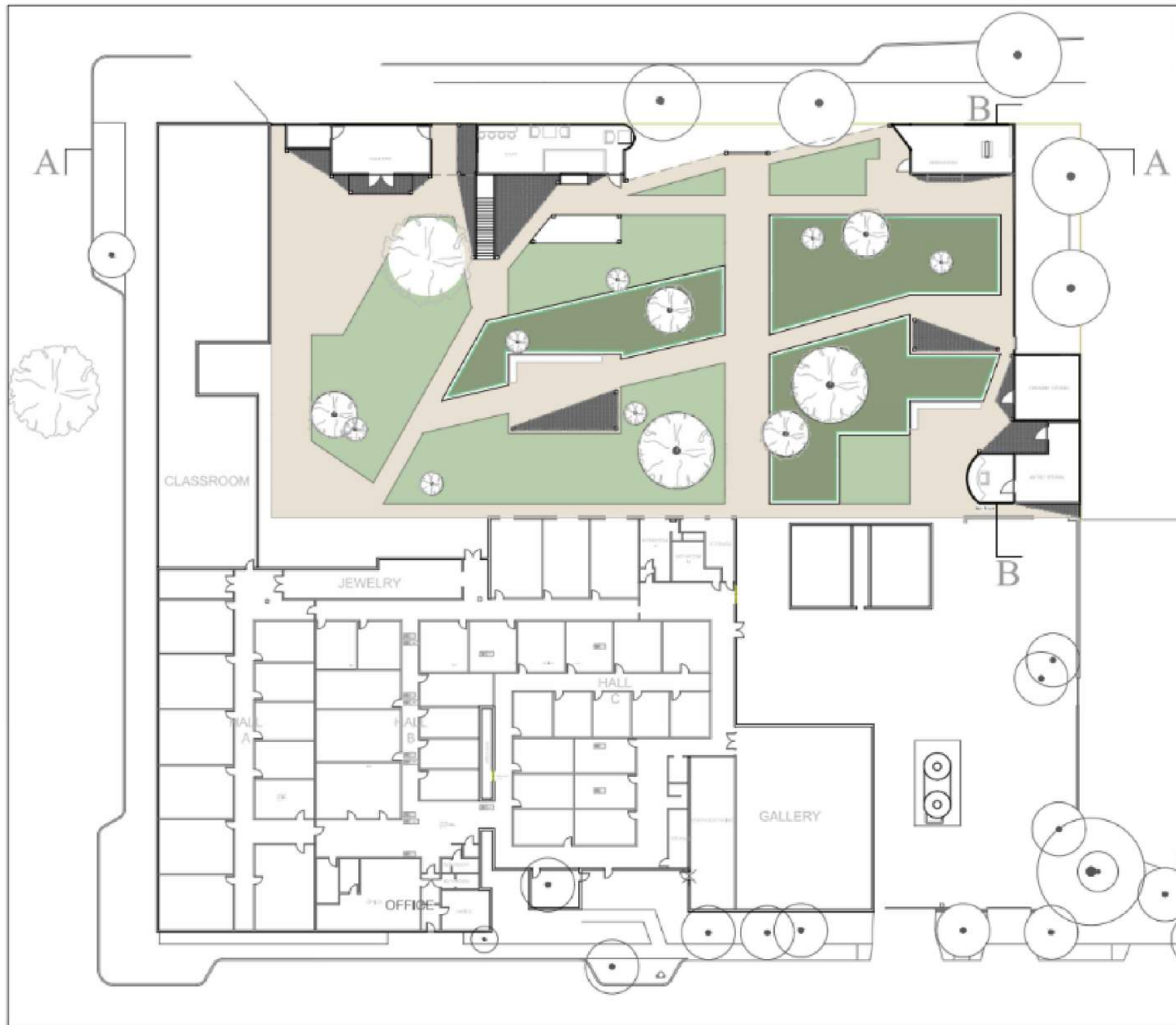
As stated on their own website, the Bakehouse Art Complex is a "premier not-for-profit incubator for artistic creativity". Located in the city of Miami, the site provides ample access to studio spaces for professional artists.

The premise of this project was to further develop a section of the site through the addition of 5 new buildings: a gallery, an additional artist studio, an additional ceramic studio, and a bookstore.

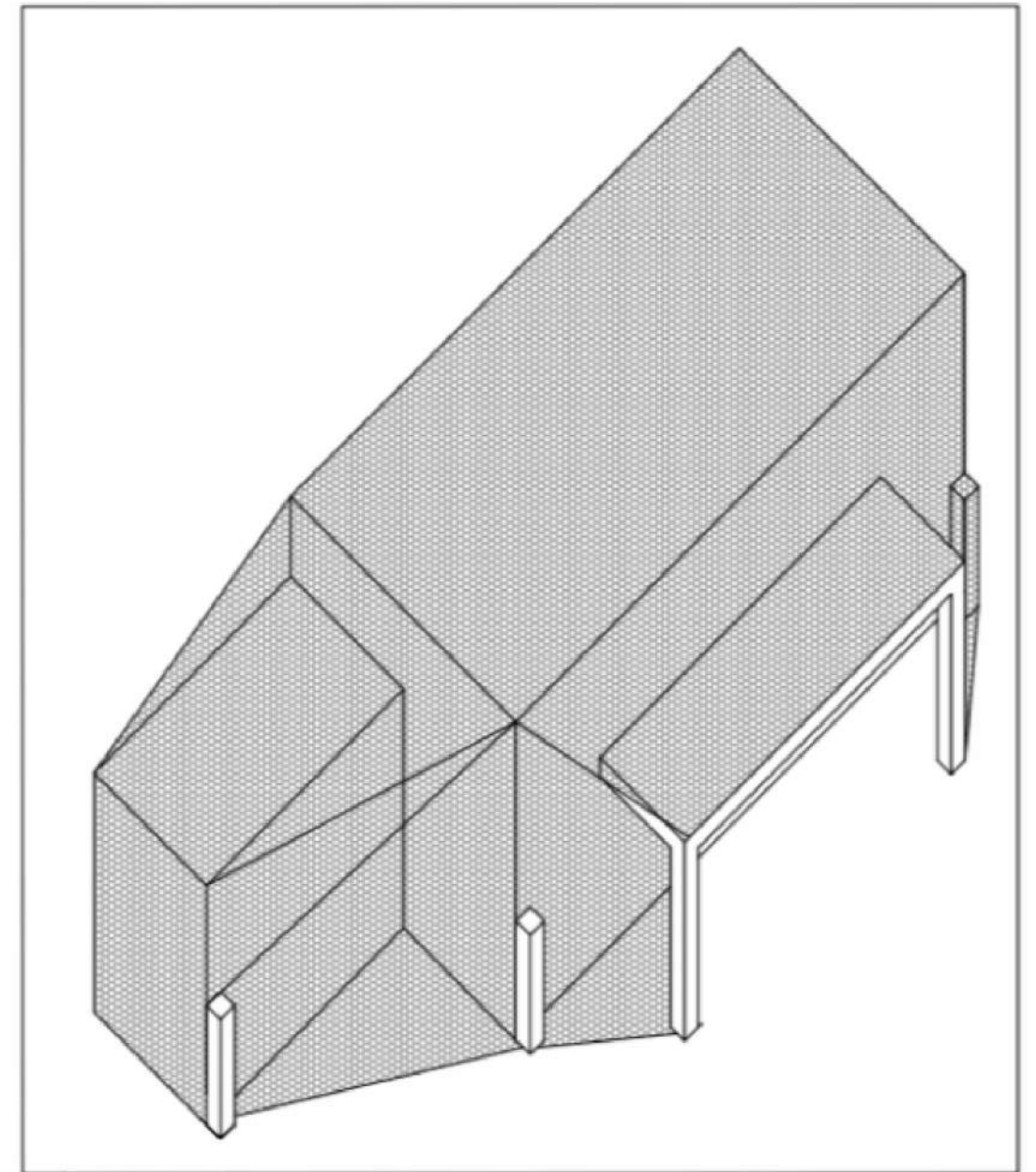
I took inspiration from the Kukje Gallery, which was designed by the architect So-Il. This building was essentially a cube with different protruding parts, wrapped in chain mail. It also has some glass elements, which allows natural light to enter the space.

On the right is a 3D model of the bookstore, which incorporates all of the previously stated features in a more geometric way. The use of additive elements helps create a more interesting silhouette, which is still kept cohesive through the use of the chain mail mesh.



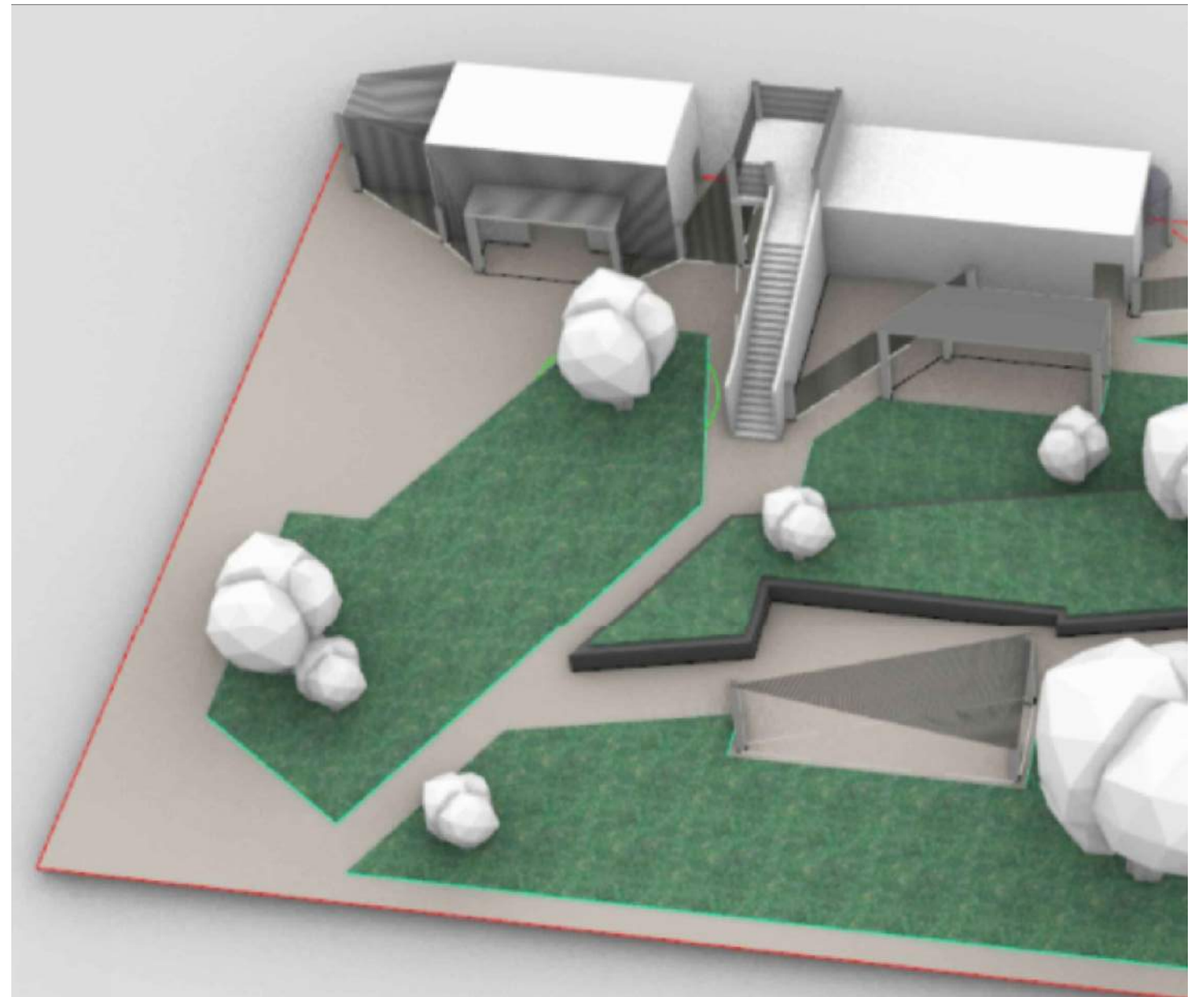
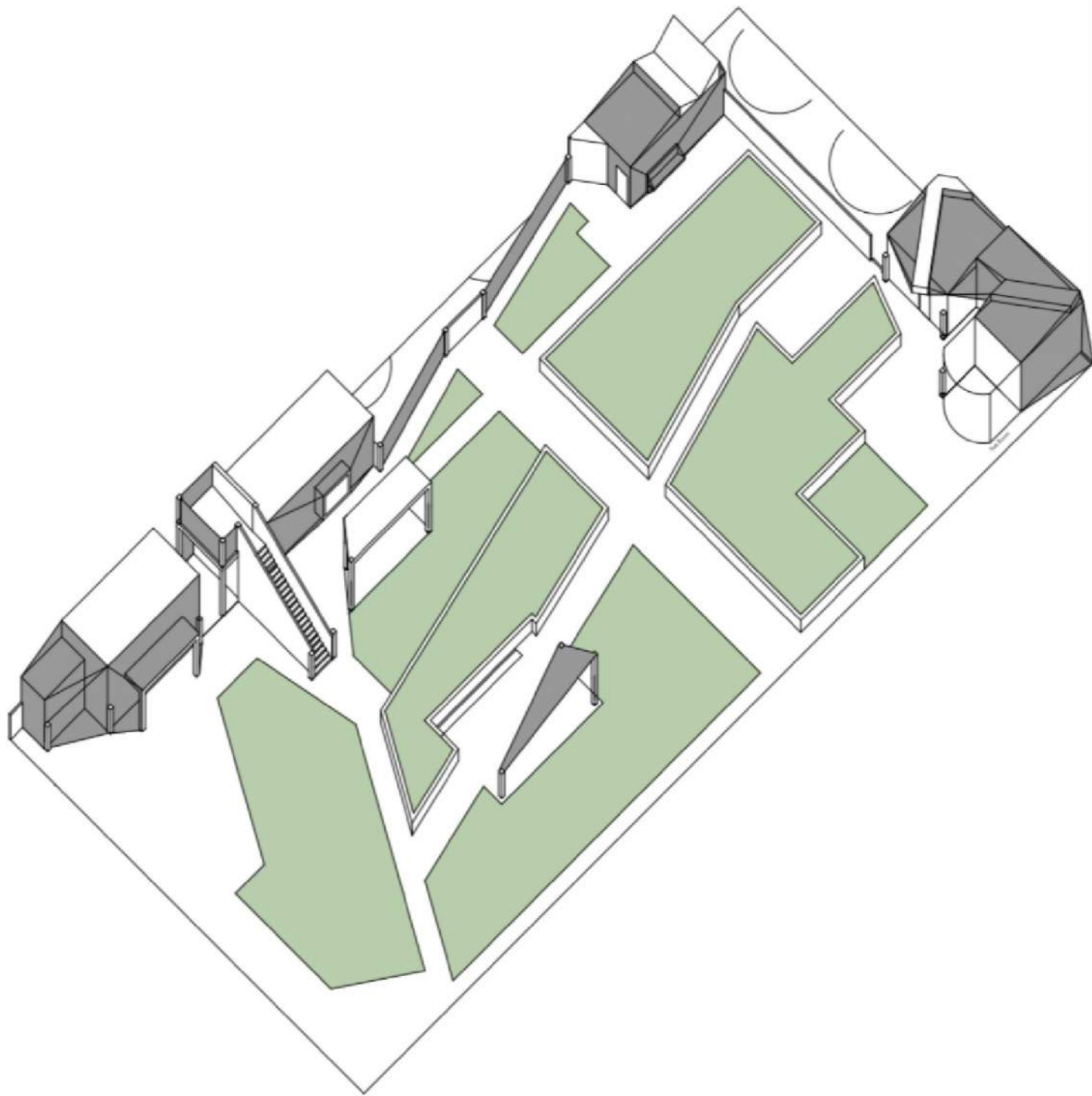


Site Plan

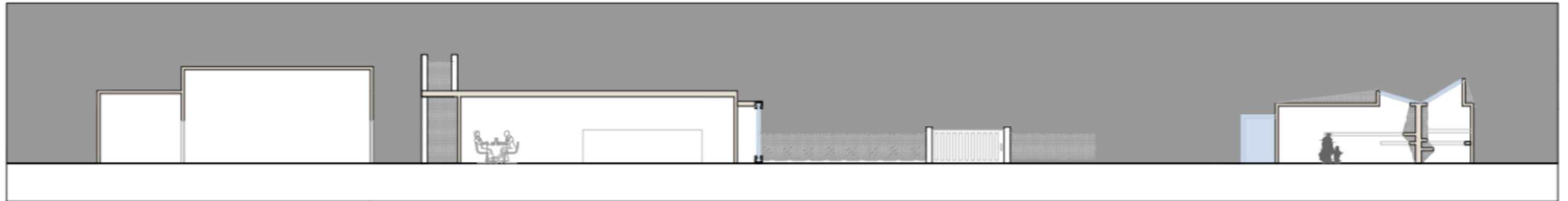


Museum Axonometric

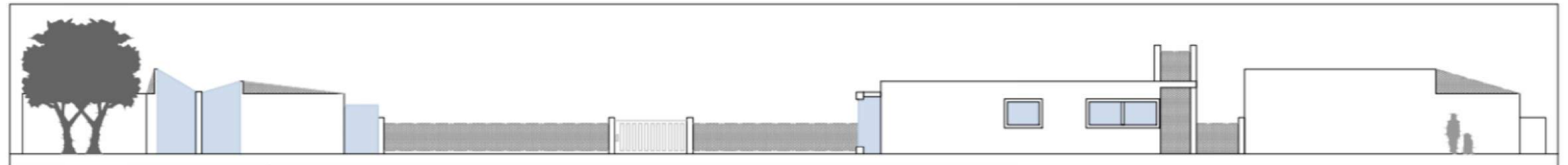
AXON AND PERSPECTIVE



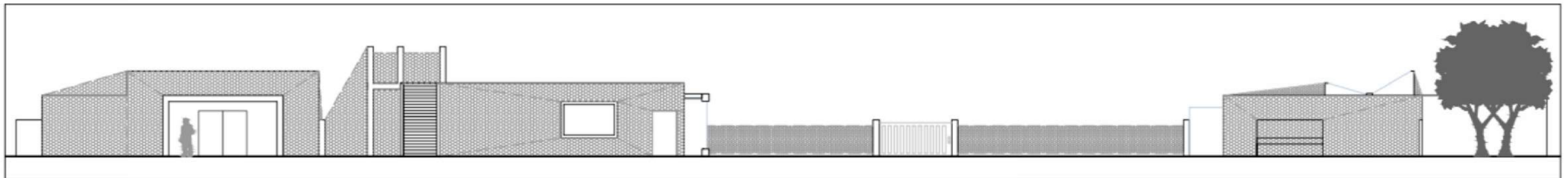
SECTIONS AND ELEVATIONS



Section A



Site Elevation - View From Street



Site Elevation - View From Courtyard